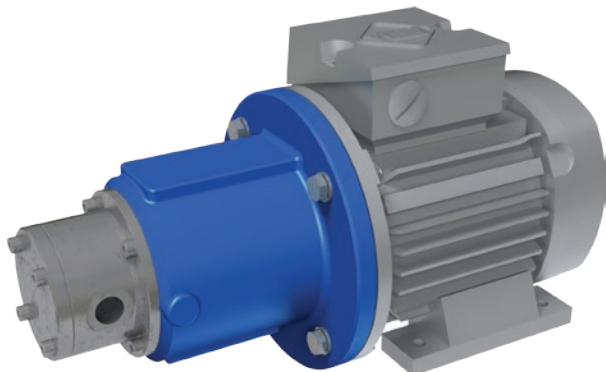


MAGNETICALLY COUPLED ROTARY SLIDING VANE PUMP

Series VANE-MAG MPA

MPA 114 - 514 (MPA I° Range)



PERFORMANCE DATA

Nominal speed:	1450 1/min / 1750 1/min
Nominal frequency:	50 Hz / 60 Hz
Nominal flow rate:	
MPA 114:	170 l/h / 210 l/h (55,48 US gph)
MPA 214:	240 l/h / 280 l/h (73,97 US gph)
MPA 314:	330 l/h / 395 l/h (104,35 US gph)
MPA 414:	410 l/h / 510 l/h (134,73 US gph)
MPA 514:	500 l/h / 575 l/h (151,9 US gph)
Discharge pressure, max:	13 bar (188,55 psi)
Design pressure:	PN 16 bar (232,06 psi)
High Pressure Versions:	PN 25, PN40, PN63, PN100 >PN100 on request
Temperature, max.:	120°C (248°F) >120°C on request
Viscosity, max.:	5000 mPa s
Density, max.:	1,9 kg/dm ³

APPLICATIONS

The VANE-MAG® sliding vane pumps have proven their performance in every application that requires lower flow rates at high discharge pressure, when corrosive liquids must be metered.

Typical Applications:

- Ammonia metering in Flue-Gas Denitrification Plants (SNCR)
- Pentane metering in Polyurethane Insulation Production Plants
- Metering pump for Sodium Methylate in Biodiesel production
- Pump for cooling agents in refrigeration technology
- Dosing / metering applications
- Plant Engineering
- Equipment Engineering
- Pharmaceutical-, Medical-, Bio- Engineering

MATERIALS

Housing:	Stainless steel AISI316Ti
O-Rings:	EPDM, Viton, Kalrez, FEP
Rotor:	Stainless steel AISI316Ti
Stator, Vanes::	Phenoli Resin Carbon-Graphite
Bearings:	SiC

CONNECTIONS

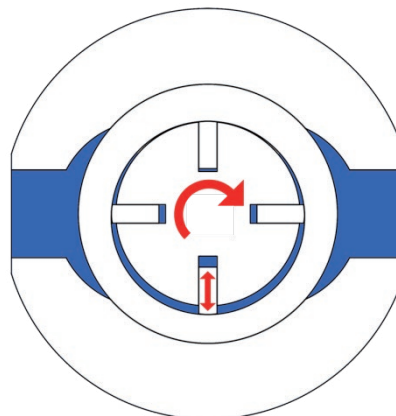
Threads:	G3/8" (f), 1/2" NPT (f)
Lap Joint Flanges:	DN15 PN10, 1/2" ANSI

DESIGN FEATURES

- Rotating positive displacement pump
- Sliding Vane Pump
- Metallic housing materials
- Magnetically coupled
- Leak-Free
- Rugged
- Wet self-priming
- Dry running capable
- Compact block design
- Approximately no pulsation
- Middle to high discharge pressure
- Low capacity flow rates
- Metering capable

PRODUCT DESCRIPTION

MARCH Series: VANE-MAG® MPA pumps are rotary positive displacement pumps, magnetically coupled and made of stainless steel AISI316Ti. Characteristic wise, rotary sliding vane pumps generate low volumetric flows with middle to high discharge pressures and approximately no pulsation. The operating principle is based on radial sliding vanes, which are rotating in an eccentric stator.



The pump housings are machined of solid block materials.

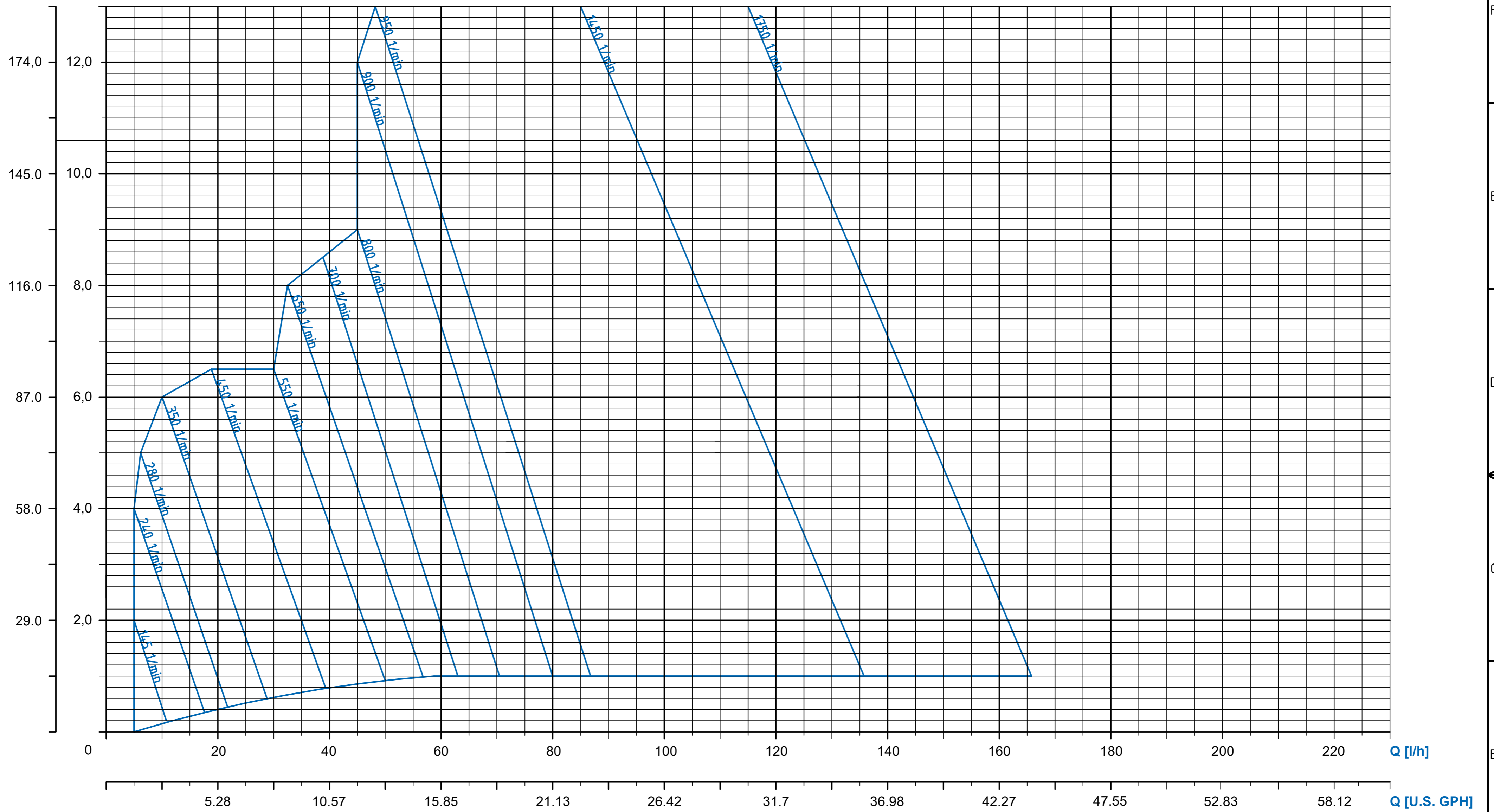
The motor power is transmitted by a frictional connection to the hydraulic part of the pumps by strong Neodymium-Permanent-Magnets. The pump is able to work without any shaft seals, which guarantees a safe and maintenance-free transfer of the liquid without any leakage of corrosive, toxic and explosive fluids. Pumps for hazardous explosive areas, zone 1 or 2, are available upon request.

MOTOR ADAPTION

EU Version:	IEC Size 71 B35, 0,37kW 1500 1/min
US Version:	NEMA56C, 0.5 HP 1750 1/min



H [psi] H [bar]

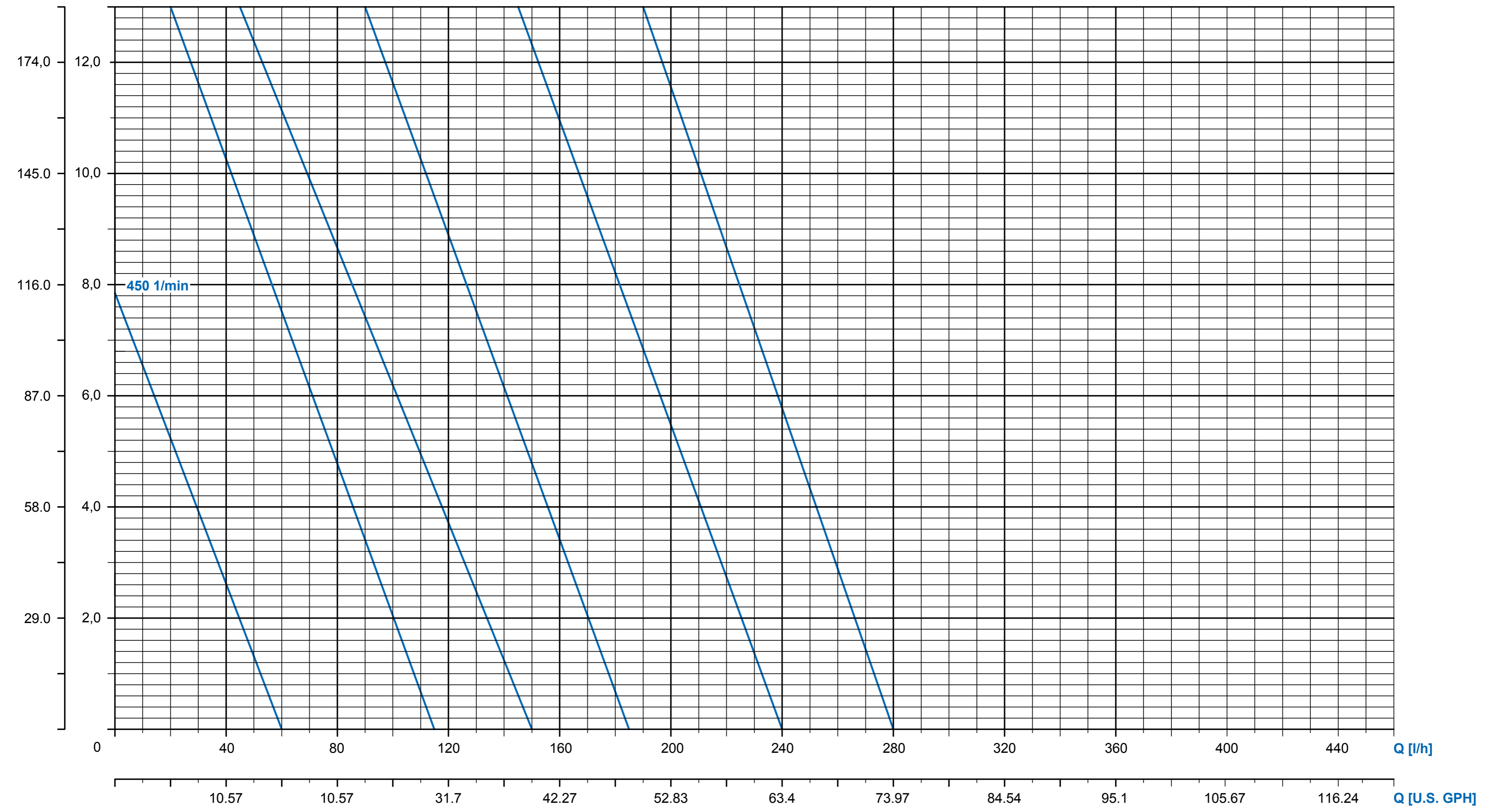


KENNLIENEN / PERFORMANCE CURVES			
Series	VANE-MAG		
Pump Size	MPA 114		
Motor Power	0,12kW	0,25kW	0,37kW / 0.5HP
Speed	8-pole (650 1/min)	6-pole (950 1/min)	4-pole (1450 1/min)
Fluid Viscosity	1 mm ² /s	Fluid Density	1 kg/dm ³



MARCH PUMPEN GmbH
 Rathenaustraße 2
 D-35394 Gießen
 www.march-pumpen.com
 info@march-pumpen.com

H [psi] H [bar]

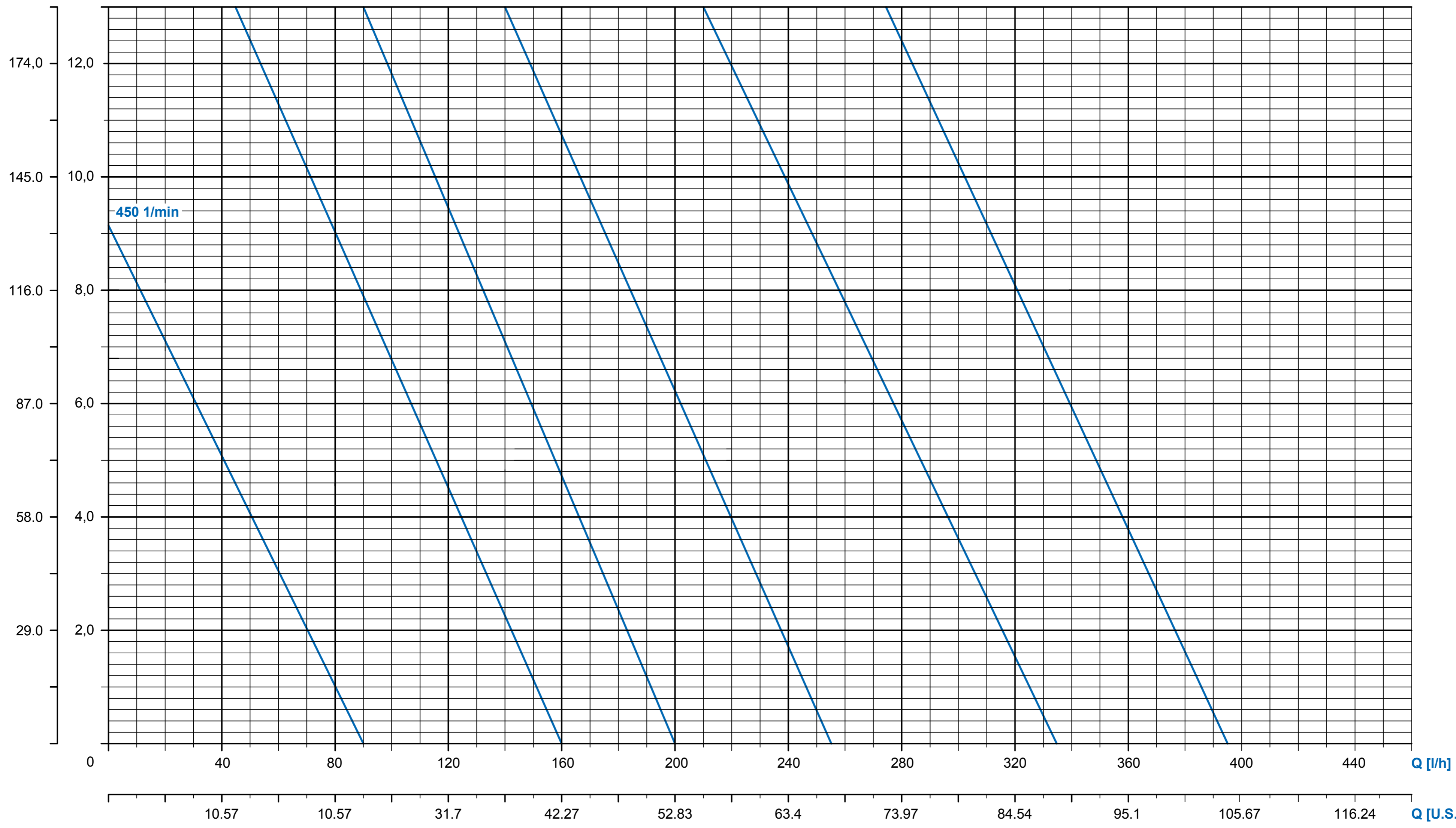


KENNLINIEN / PERFORMANCE CURVES			
Series	VANE-MAG		
Pump Size	MPA 214		
Motor Power	0,12kW	0,25kW	0,37kW / 0.5HP
Speed	750 / 900 1/min	900 / 1150 1/min	1450 / 1750 1/min
Fluid Viscosity	1 mm ² /s	Fluid Density	1 kg/dm ³



MARCH PUMPEN GmbH
 Rathenaustraße 2
 D-35394 Gießen
www.march-pumpen.com
info@march-pumpen.com

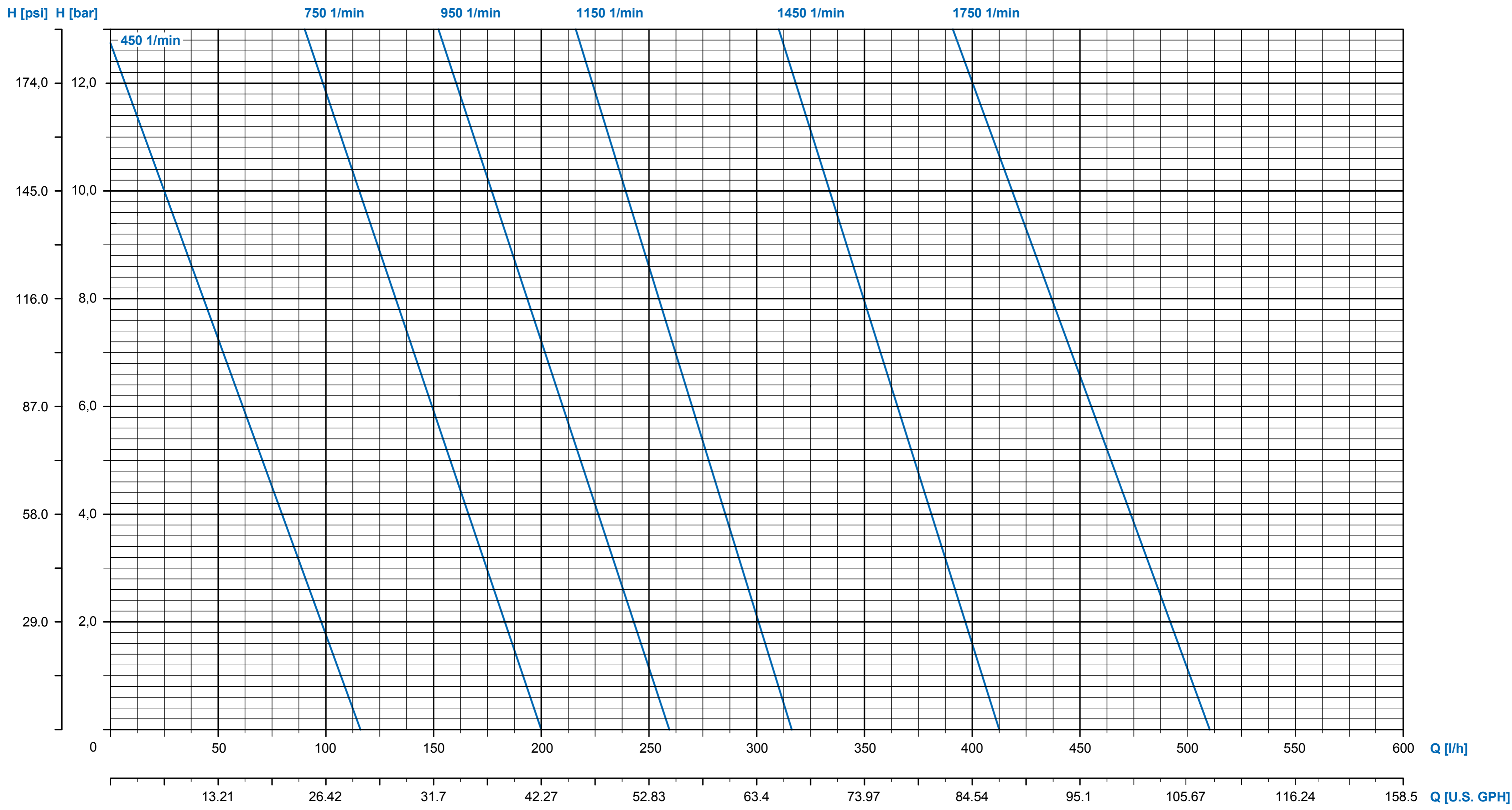
H [psi] H [bar]



KENNLINIEN / PERFORMANCE CURVES			
Series	VANE-MAG		
Pump Size	MPA 314		
Motor Power	0,12kW	0,25kW	0,37kW / 0.5HP
Speed	750 / 900 1/min	900 / 1150 1/min	1450 / 1750 1/min
Fluid Viscosity	1 mm ² /s	Fluid Density	1 kg/dm ³

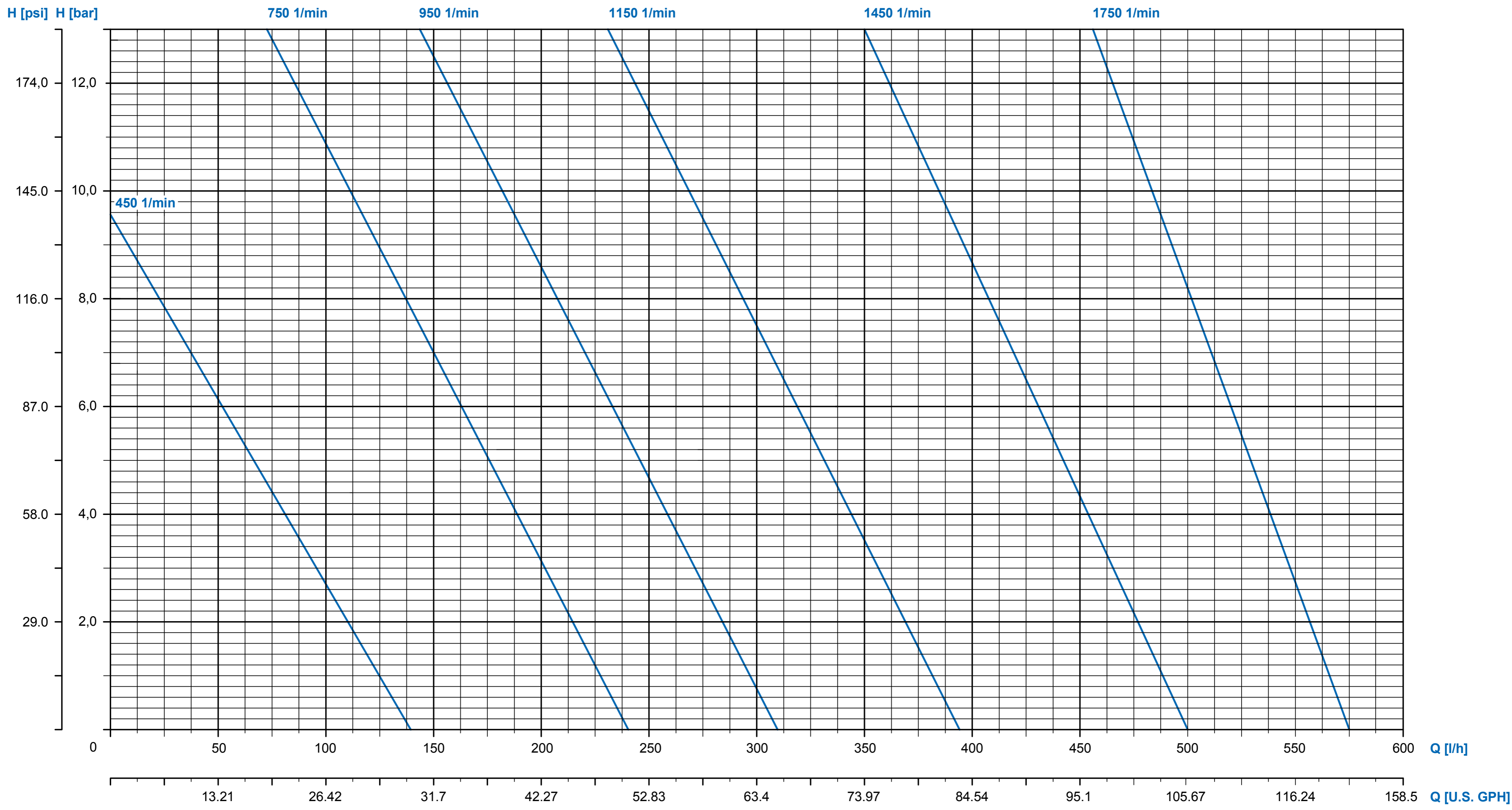


MARCH PUMPEN GmbH
 Rathenaustraße 2
 D-35394 Gießen
www.march-pumpen.com
info@march-pumpen.com



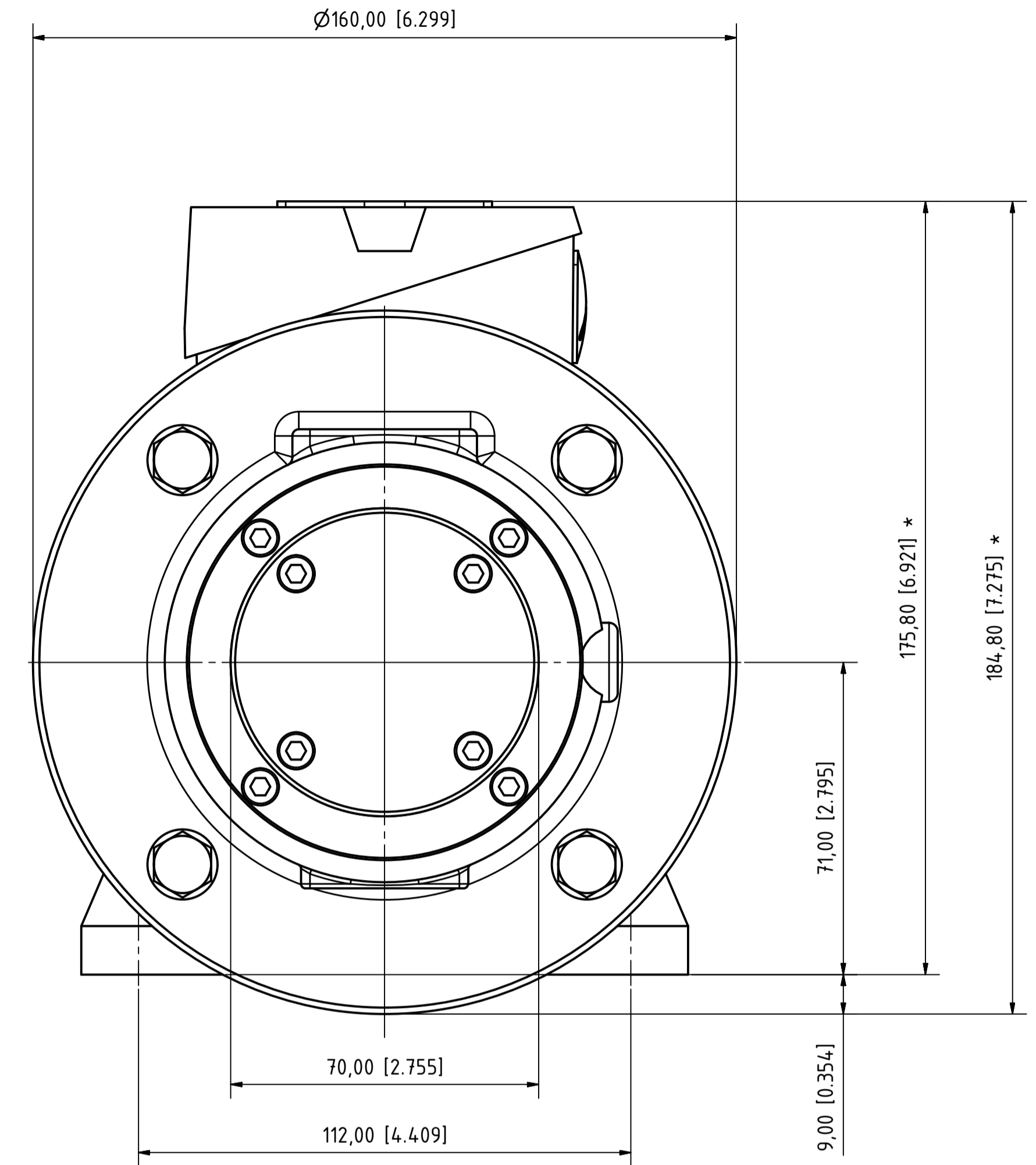
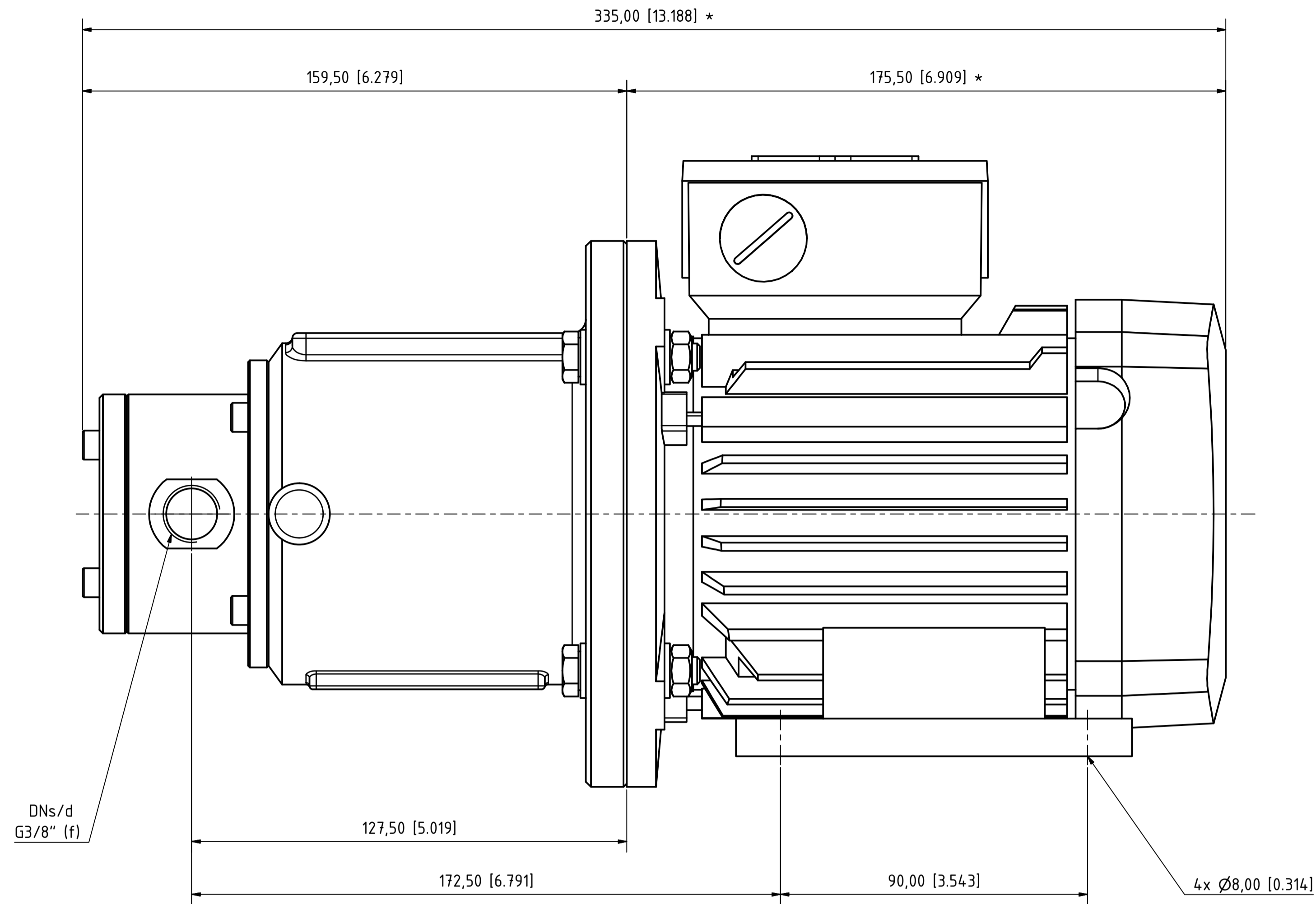
MARCH PUMPEN
 MARCH PUMPEN GmbH
 Rathenaustraße 2
 D-35394 Gießen
 www.march-pumpen.com
 info@march-pumpen.com

KENNLINIEN / PERFORMANCE CURVES			
Series	VANE-MAG		
Pump Size	MPA 414		
Motor Power	0,12kW	0,25kW	0,37kW / 0.5HP
Speed	750 / 900 1/min	900 / 1150 1/min	1450 / 1750 1/min
Fluid Viscosity	1 mm ² /s	Fluid Density	1 kg/dm ³



KENNLINIEN / PERFORMANCE CURVES			
Series	VANE-MAG		
Pump Size	MPA 514		
Motor Power	0,12kW	0,25kW	0,37kW / 0.5HP
Speed	750 / 900 1/min	900 / 1150 1/min	1450 / 1750 1/min
Fluid Viscosity	1 mm ² /s	Fluid Density	1 kg/dm ³

MARCH PUMPEN
MARCH PUMPEN GmbH
Rathenaustraße 2
D-35394 Gießen
www.march-pumpen.com
info@march-pumpen.com



- ABMESSUNGEN
mm [Zoll]
* Maß kann bei anderen Motorenfabrikaten abweichen

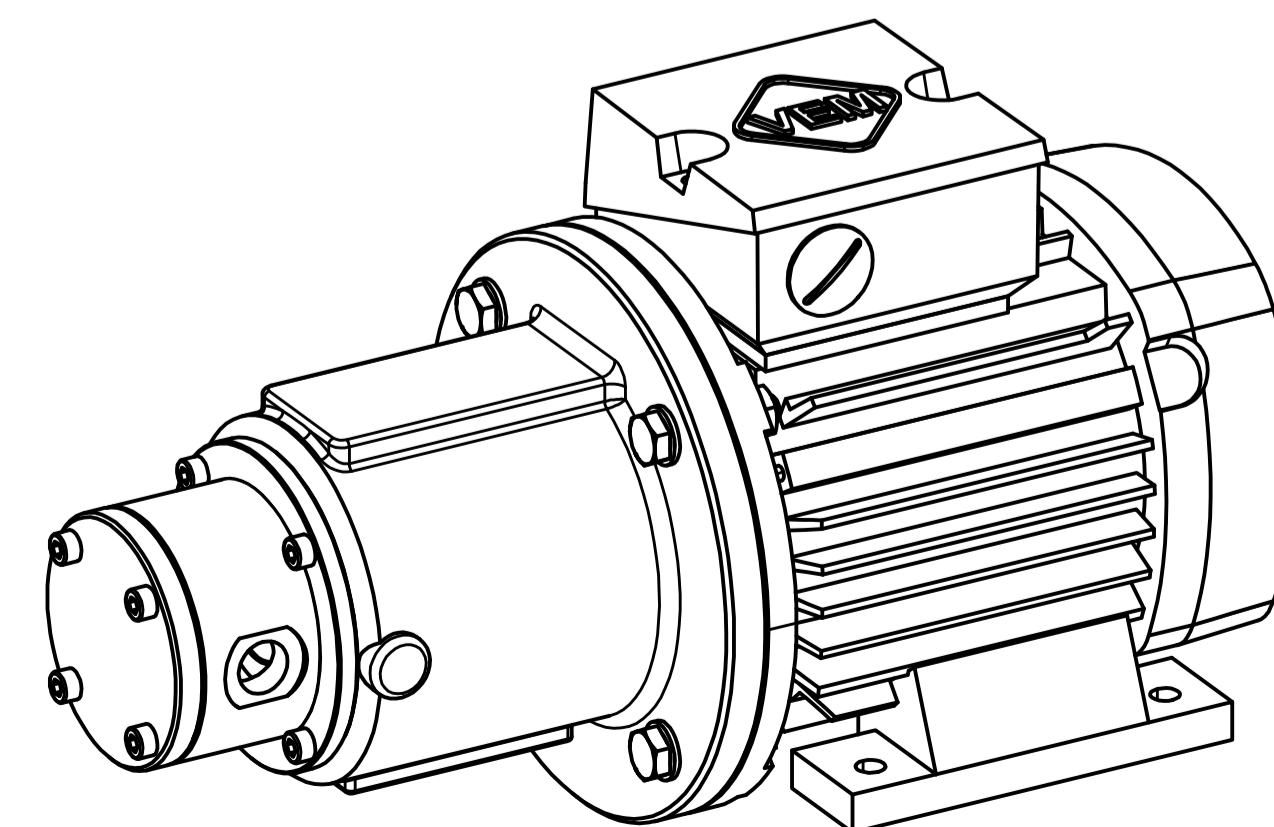
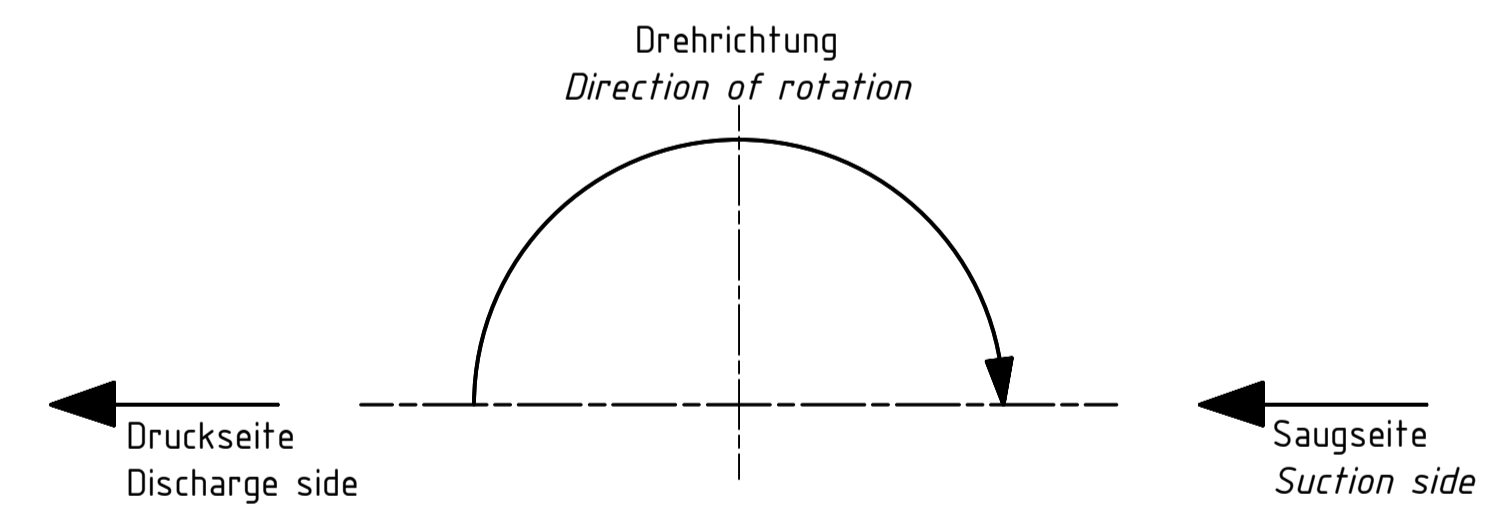
- DIMENSIONS
mm [Inch]
* may change with different motor manufacturer

- ANTRIEB
Drehstrom-Asynchronmotor nach IEC Richtlinien.
Fabrikat: VEM
Größe: IEC BG71 IM B3/B5, 0,37kW , 1450 1/min

- DRIVE
Three phase TEFC electric motor acc. to IEC Standards
Manufacturer: VEM
Size: IEC71 B3/B5, 0,37kW, 1450 rpm

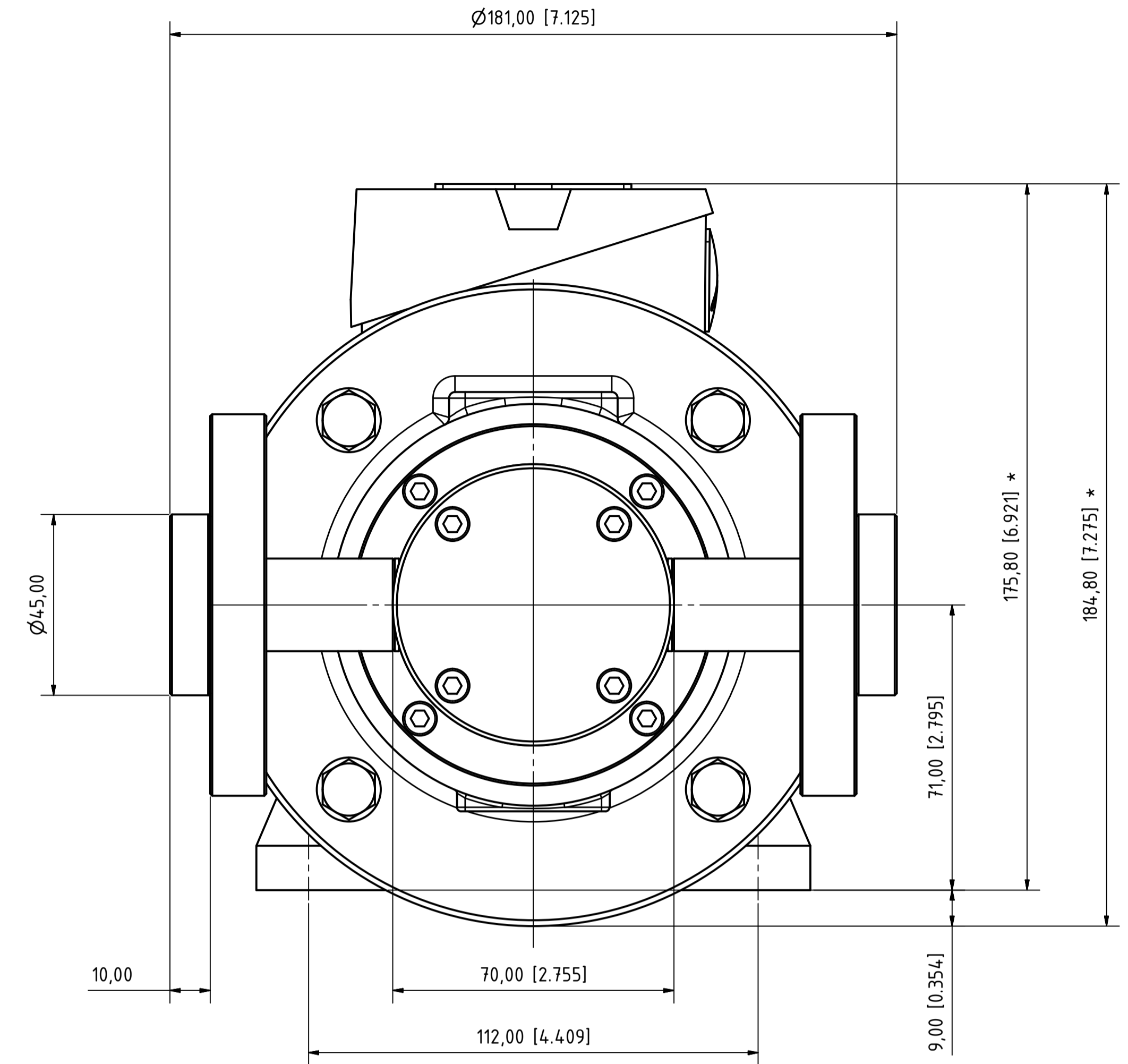
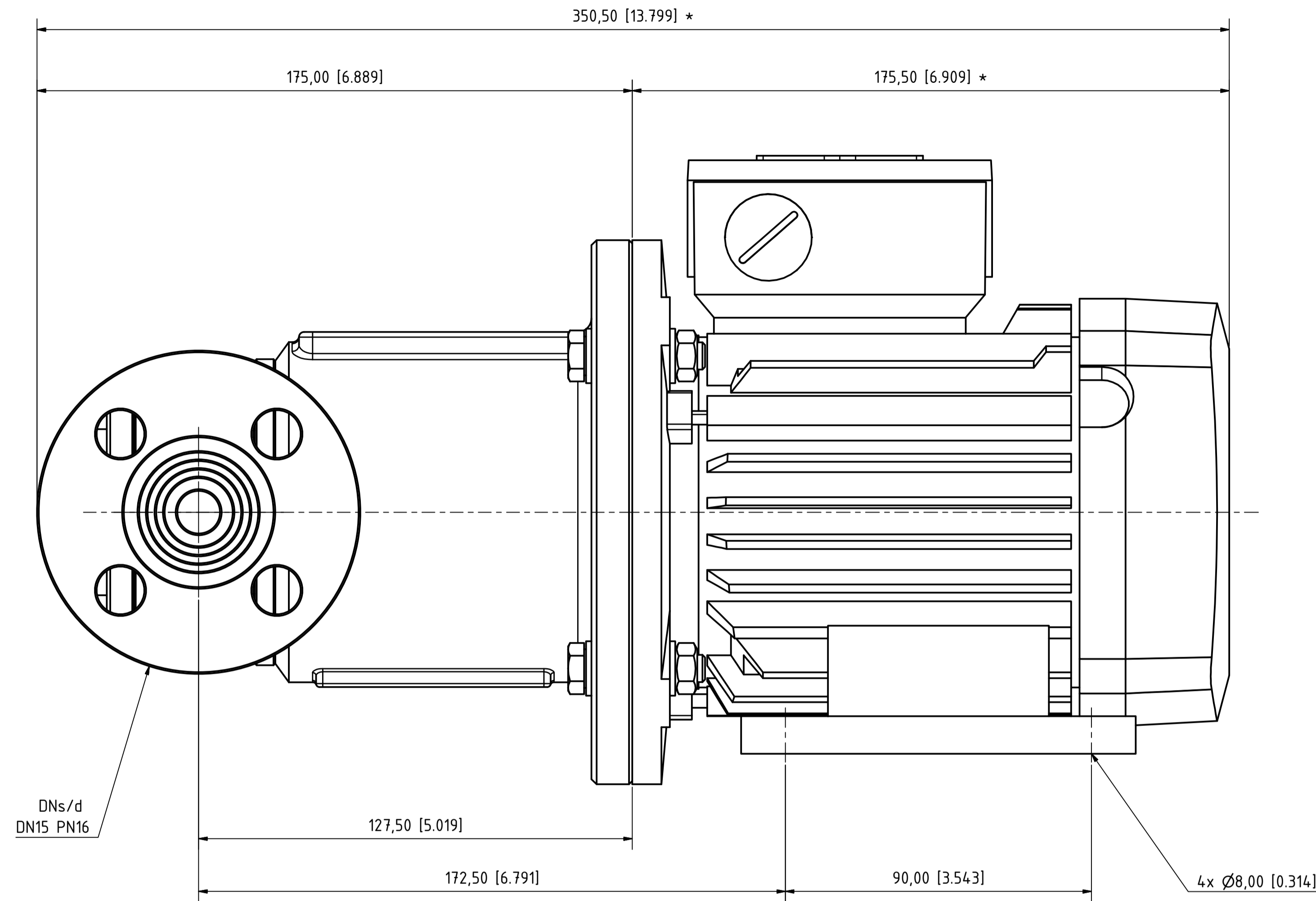
- ANSCHLÜSSE DN/d
G3/8" Innengewinde
max. Einschraubtiefe 10mm

- CONNECTIONS DN/d
Threaded G3/8" female
max. screw-in depth 10mm



Alle Angaben unverbindlich, technische Änderungen vorbehalten! Technical data not binding and subject to change!
Copyright MARCH PUMPEN GmbH 2017

	MARCH PUMPEN GmbH & Co KG Rateneustraße 2 D-32334 Gerdau info@march-pumpen.com www.march-pumpen.com		1:1	VANE-MAG MPA 0100 ABMESSUNGEN DIMENSIONS
	Gezeichnet: 06.06.2017 Lärch	Name:		
Status:	Änderungen:	Datum:	Name:	



- ABMESSUNGEN
mm [Zoll]
* Maß kann bei anderen Motorenfabrikaten abweichen

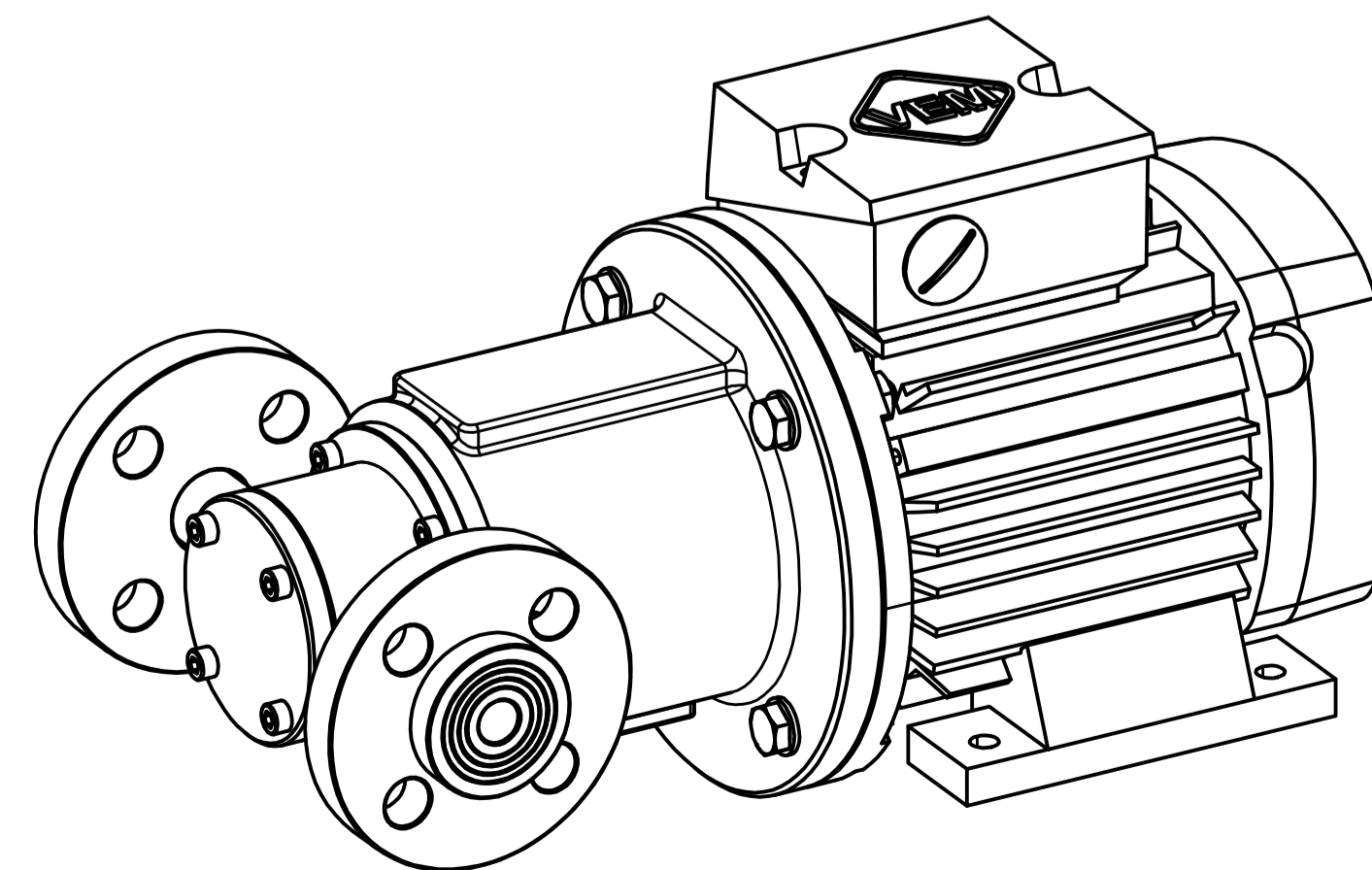
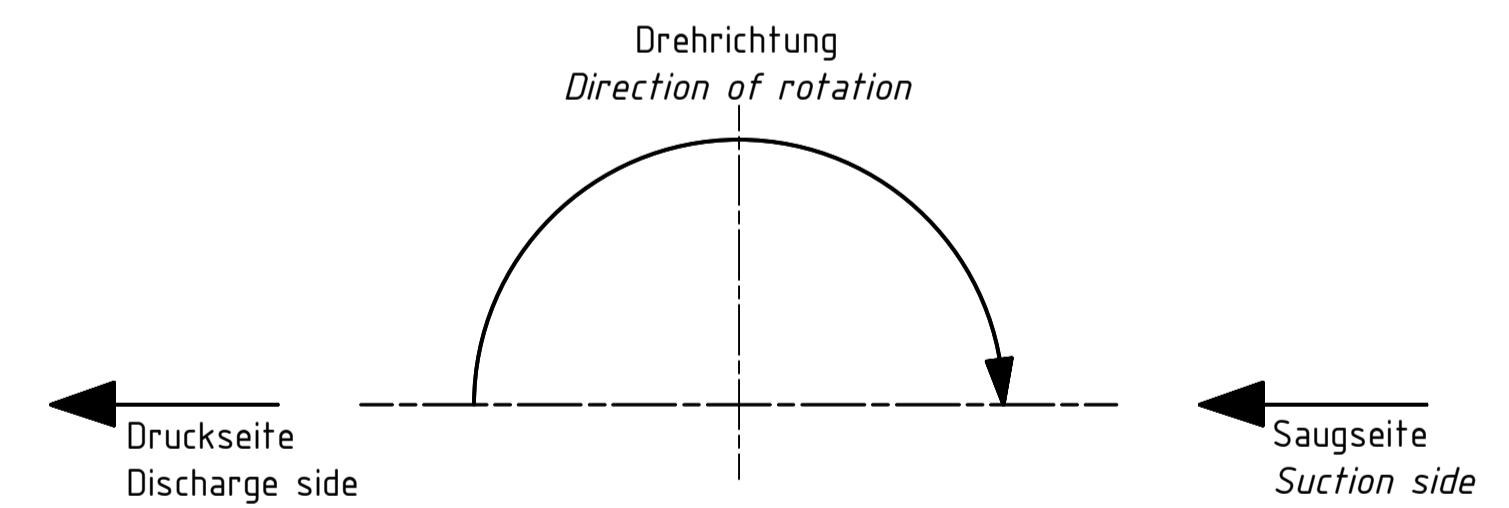
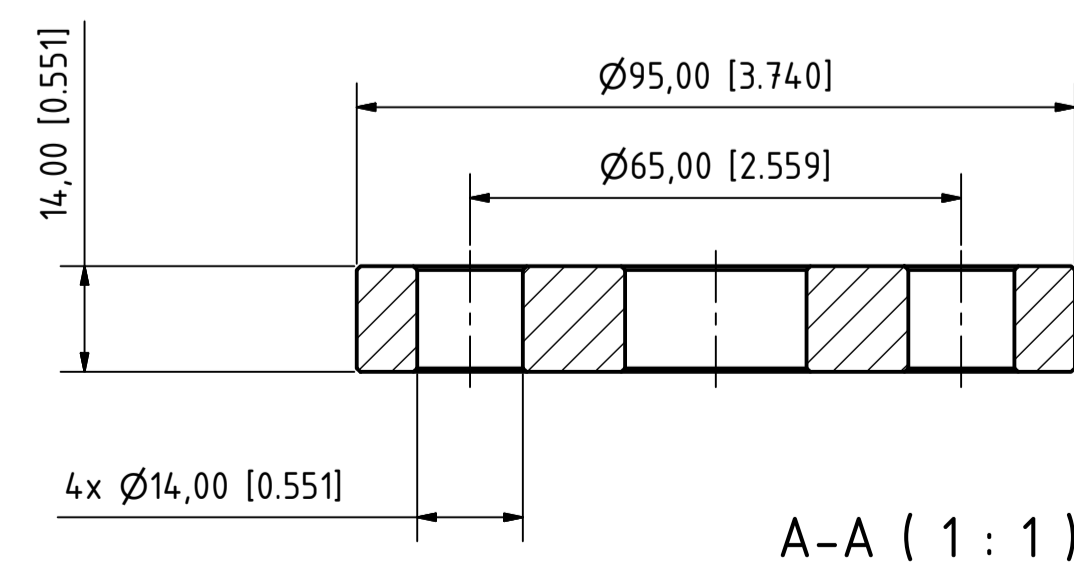
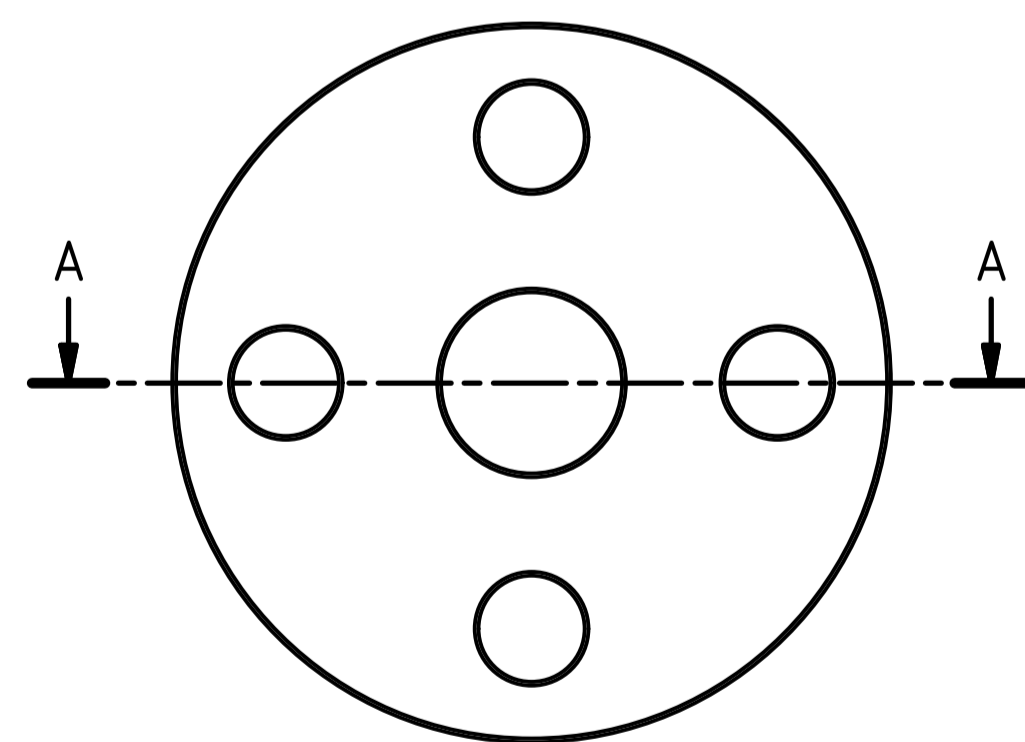
- DIMENSIONS
mm [Inch]
* may change with different motor manufacturer

- ANTRIEB
Drehstrom-Asynchronmotor nach IEC Richtlinien.
Fabrikat: VEM
Größe: IEC BG71 IM B3/B5, 0,37kW , 1450 1/min

- DRIVE
Three phase TEFC electric motor acc. to IEC Standards
Manufacturer: VEM
Size: IEC71 B3/B5, 0,37kW, 1450 rpm

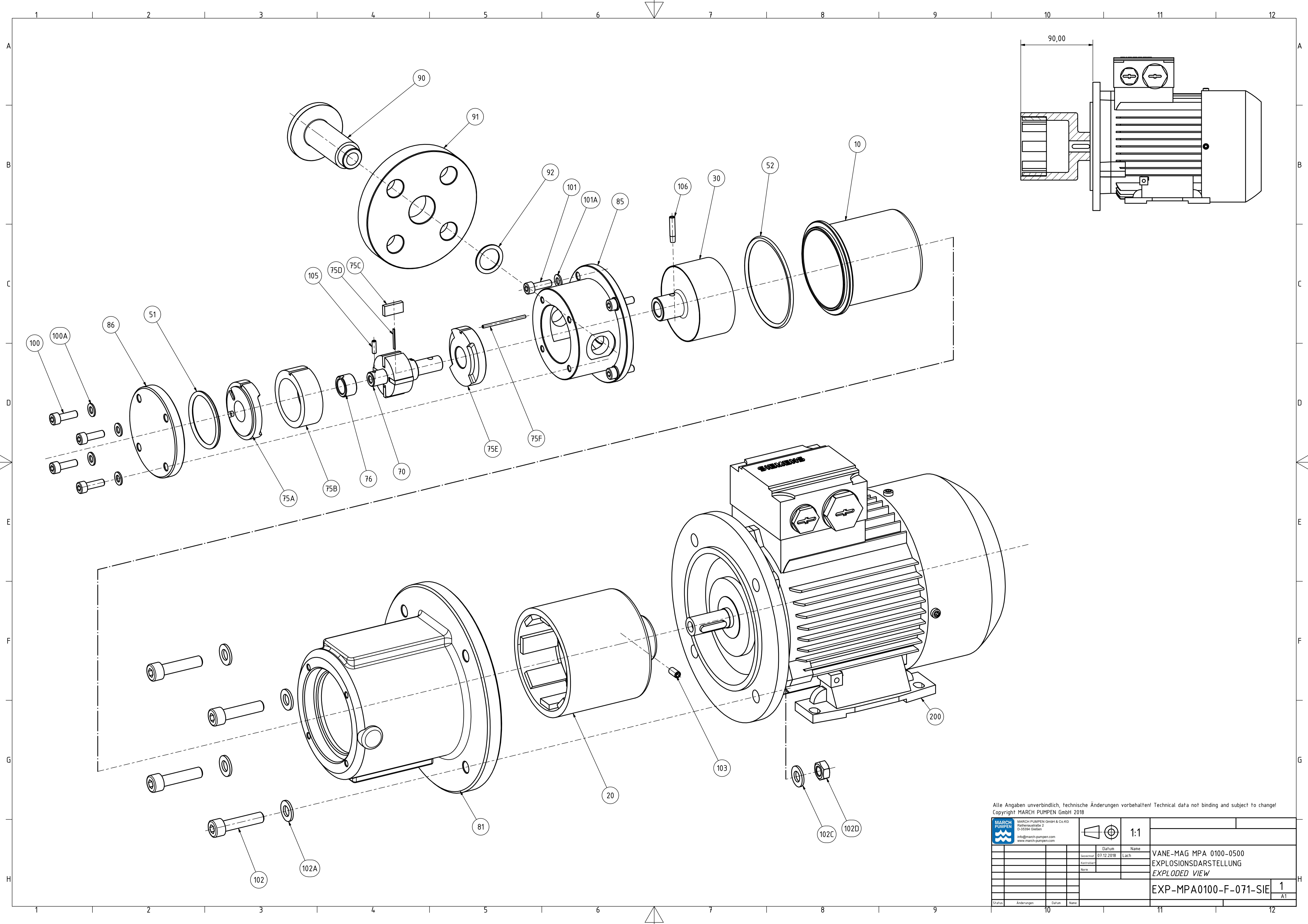
- ANSCHLÜSSE DNs/d
Losflansch DN15 PN16 - 1.4571

- CONNECTIONS DNs/d
Lap Joint Flange DN15 PN16 - 1.4571 (AISI316Ti)



Alle Angaben unverbindlich, technische Änderungen vorbehalten! Technical data not binding and subject to change!
Copyright MARCH PUMPEN GmbH 2017

	MARCH PUMPEN GmbH & Co KG Rateneustraße 2 D-30304 Gerdau		1:1	VANE-MAG MPA 0100 ABMESSUNGEN DIMENSIONS
	Gezeichnet 06.06.2017	Name Läch		
Kontrolliert None	Datum 06.06.2017	Blatt 1	Blatt 1	
Status Änderungen Datum Name	Datum Name	Blatt 1	Blatt 1	



Alle Angaben unverbindlich, technische Änderungen vorbehalten! Technical data not binding and subject to change!
 Copyright MARCH PUMPEN GmbH 2018

	MARCH PUMPEN GmbH & Co KG Rateneustraße 2 D-32334 Giederen info@march-pumpen.com www.march-pumpen.com		1:1		
	Gezeichnet	07.12.2018		Name	VANE-MAG MPA 0100-0500
	Kontrolliert			EXPLOSIONSDARSTELLUNG	
	Nr.			EXPLODED VIEW	
				EXP-MPA0100-F-071-SIE 1	
				A1	
Status	Änderungen	Datum	Name		