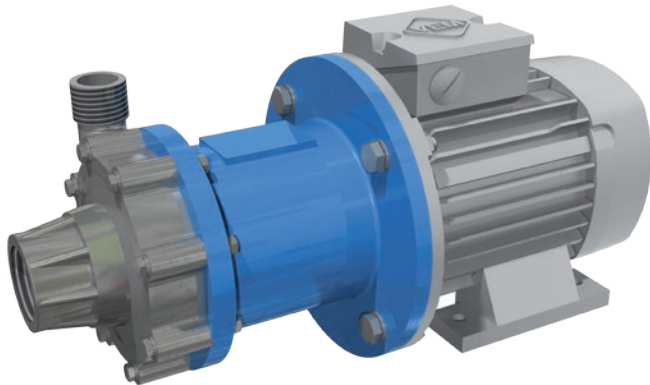


# MAGNETIC DRIVEN CENTRIFUGAL PUMPS

## Series EUROLINE

### M10.1



#### TECHNICAL DATA

Nominal speed:	2900 1/min
Capacity flow, max.:	12 m <sup>3</sup> /h
Discharge head, max.:	12 mWs
Design pressure, max.:	16 bar
Design temperature, max.:	120°C
Density, max.:	1,9 kg/dm <sup>3</sup>
Viscosity, max.:	200 cP

#### APPLICATIONS

Series M / EUROLINE Magnetic Driven Centrifugal Pumps are used especially for a safe handling of corrosive liquids, acids, lyes and solvents. Proven applications e.g. the use as filterpumps in plating industry, such as recirculating pumps in chemical industries and Plants, as well as in food-, pharmaceutical industry and biotechnics.

#### CONNECTIONS

Suction side: G1 1/2" female, Flanged DN40  
Discharge side: G1" male, Flanged DN25

#### MATERIALS

Housing: AISI316L  
O-Ring: EPDM, FKM, FEP  
Bushing: PTFE C25%, Carbon-Graphite, SiC  
Shaft: SiC, Hastelloy C, AISI316  
Thrust bearing: PTFE C25%, Carbon-Graphite

#### DESIGN FEATURES

- Centrifugal Pump
- Closed Impeller, capsulated
- Leak-free
- Magnetic driven
- NdFeB or CoSm permanent magnets
- Closed coupled
- Normal suction
- Metallic
- Maintenance free
- Only a few wear parts
- Pump execution acc. to Ex II2G cbk T3-5

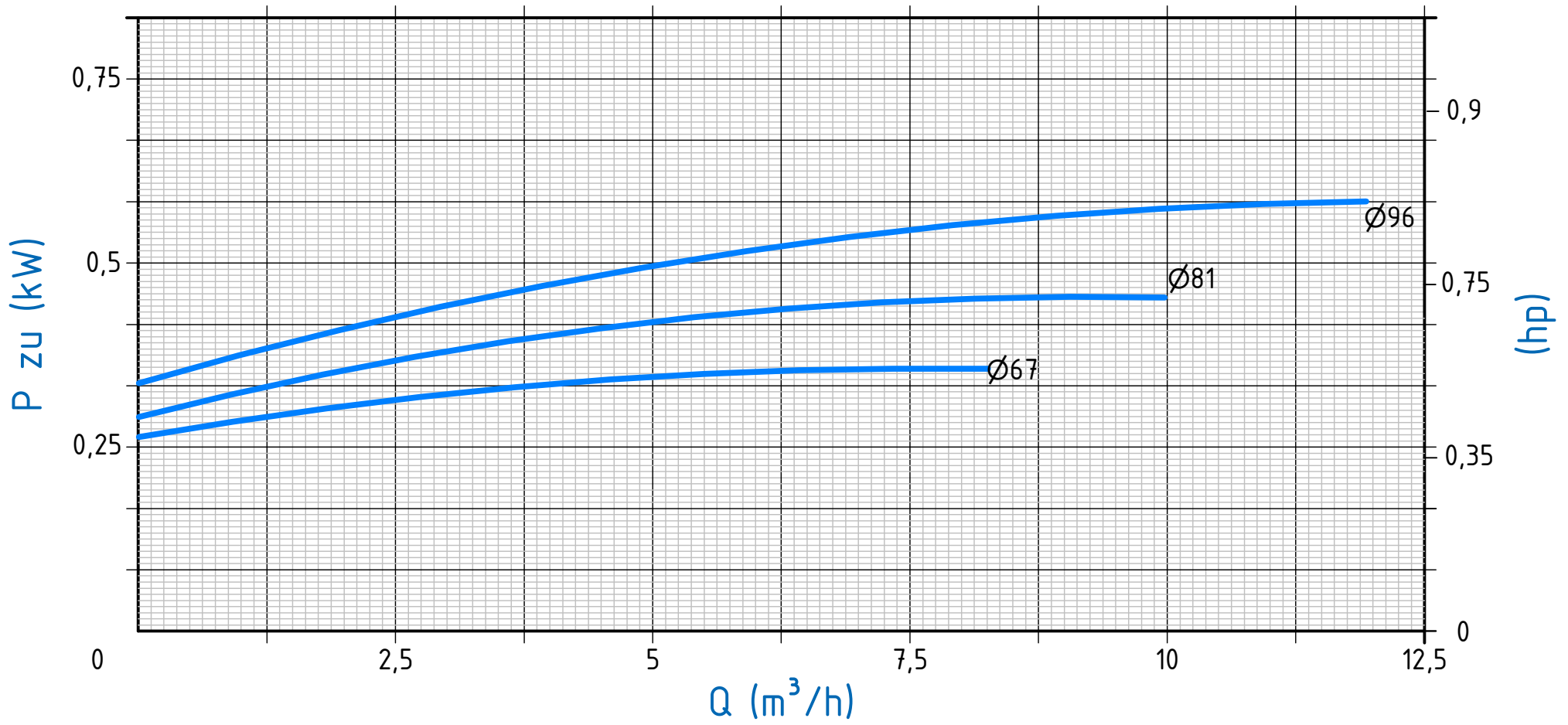
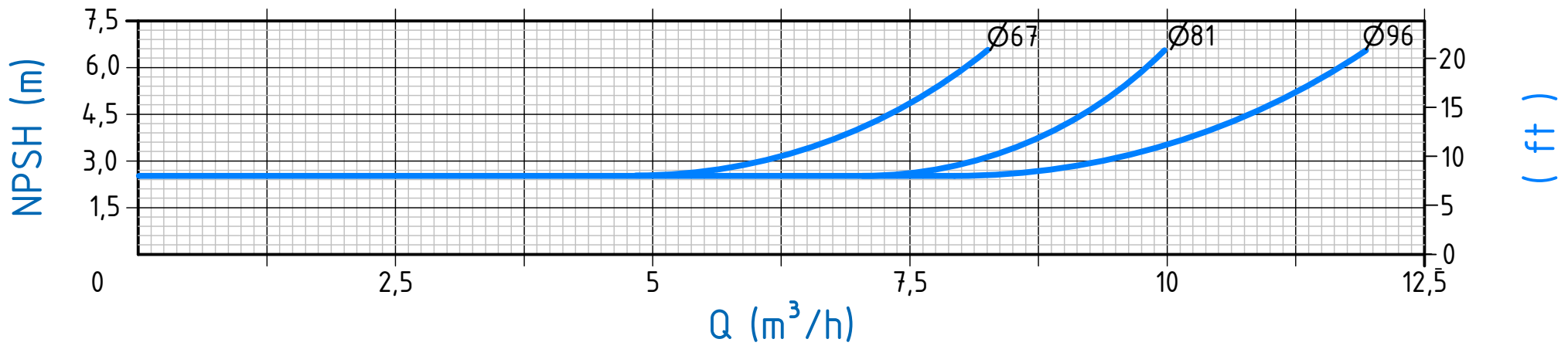
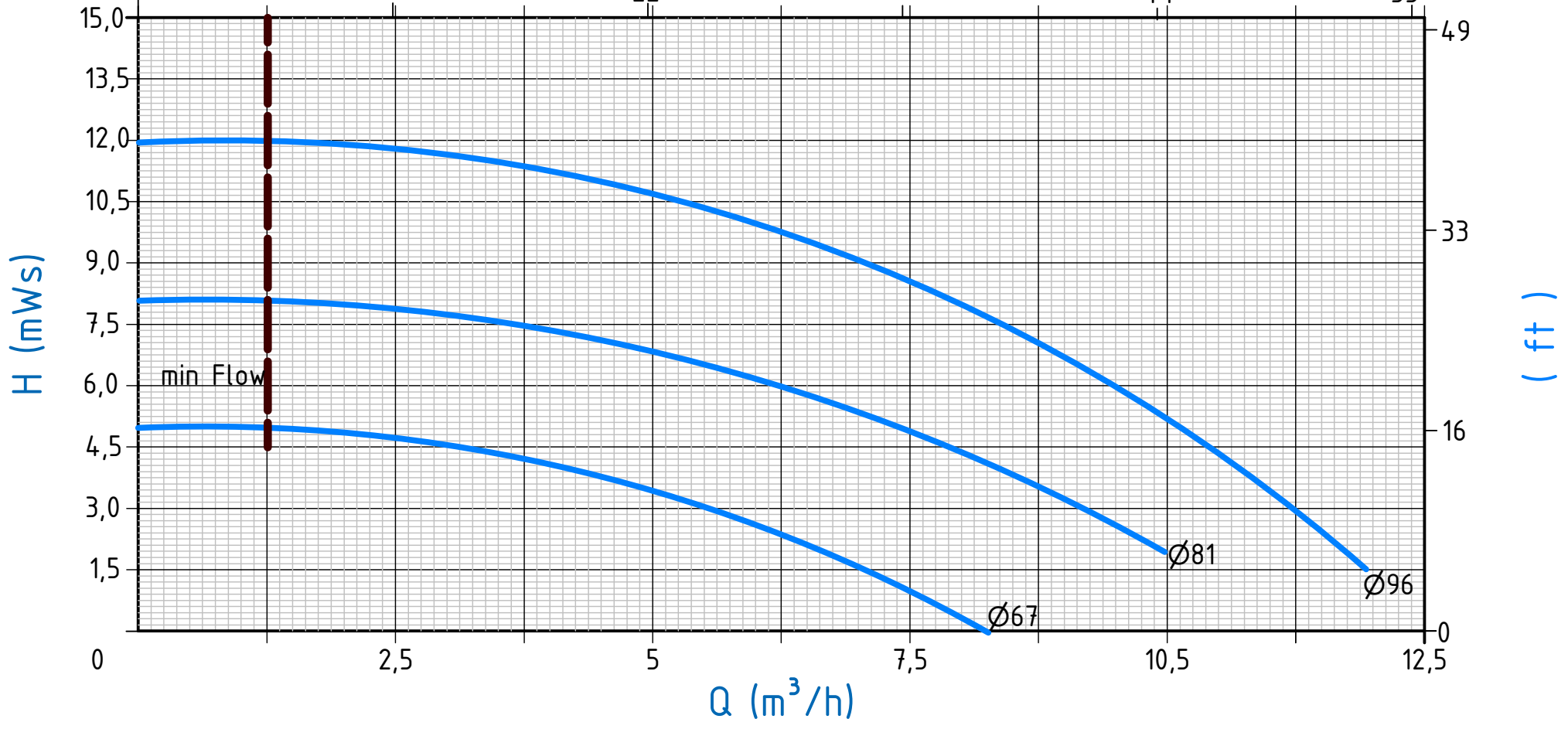
#### PRODUCT DESCRIPTION


MARCH Magnetic Driven Centrifugal Pumps are designed to work completely without mechanical shaft sealing. The motor power is transmitted by a frictional connection through strong drive magnets to the hydraulic part. MARCH Magnetic Driven Centrifugal Pumps guarantee highest quality standards, economic efficiency and reliability in liquid transfer of aggressive, toxic and environmental threatening liquids.

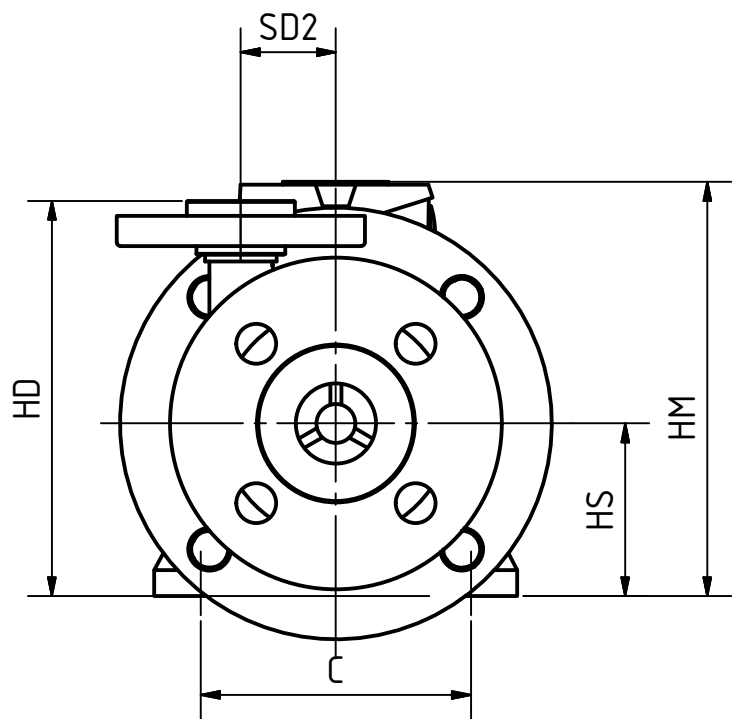
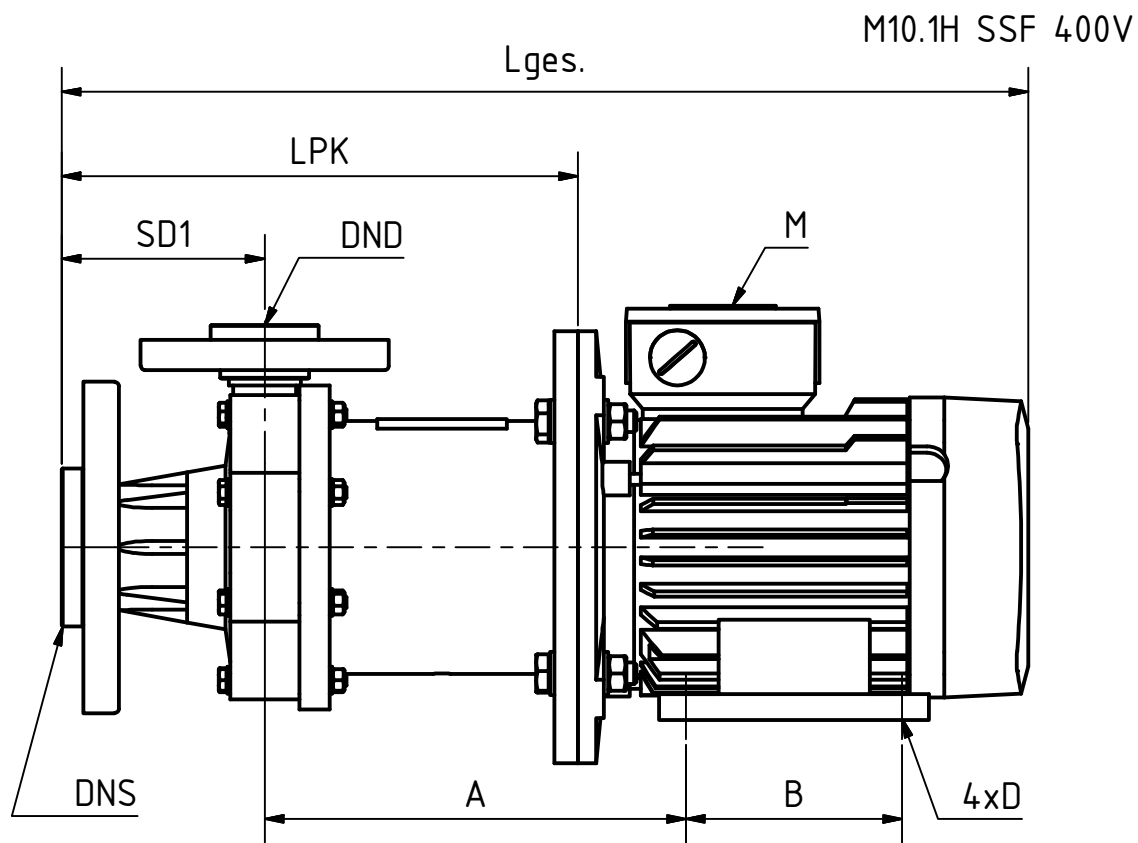
The pumps are built with stainless steel housing parts and in a closed coupled block design as standard. The modular construction allows a quick exchange of the wetted parts within a few minutes and without special tools. The friction bearing lubrication and cooling is done by the pumped liquid. As the pumps work maintenance-free, an operation without liquid (dry running) has to be avoided. European IEC standard motors according to IEC / EN 600340 are assembled on all Series M / EUROLINE Pumps. Explosion proof models are available upon request. All Series M / EUROLINE pumps can be supplied with BSP/NPT threads, flanges, hose connection or union fitting. The operative limits, especially min. and max. flow rates and the required net positive suction head (NPSH) are important for the trouble-free operation of the pump.



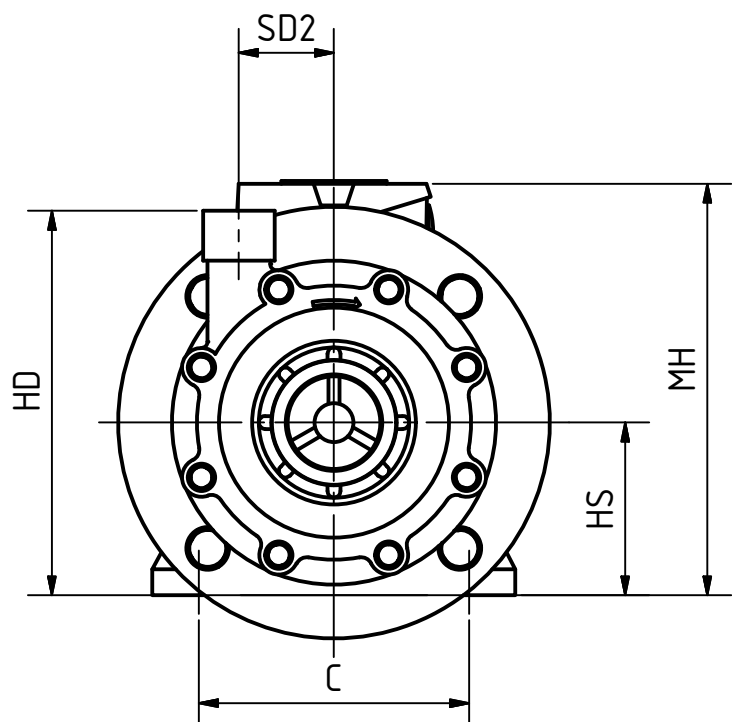
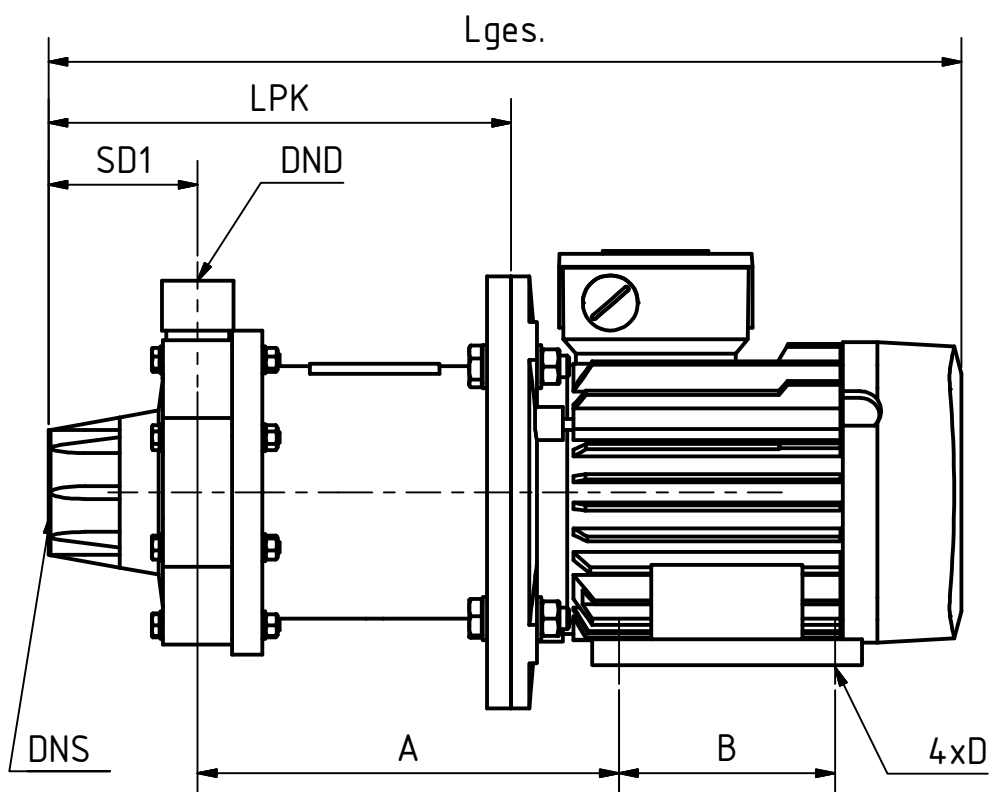
US G.P.M.



 <p>MARCH PUMPEN GmbH &amp; Co.KG Rathenastraße 2 D-35394 Gießen info@march-pumpen.com www.march-pumpen.com</p>	Pumpe/ Pump	Drehzahl/ Speed	Lauf­rad/ Impeller	Dichte / S.G.	Baureihe / Series :
	M10.1	2900 RPM	Ø96	max. 1,9 kg/dm <sup>3</sup>	M/Euroline
			Ø81		Typ / Type:
		Ø67			M10.1
					Motor:
					1,1 kW IEC BG90



M10.1H SSR 400V



Pumpentyp	Abmessungen / Dimensions								
	Typ	U [V]	P [kW]	f [Hz]	n [min]	M			
M10.1 SSF 400V	IEC BG 80 B35	400	1,1	50	2900	DNS	DND	SD1	SD2
M10.1 SSR 400V						-	-	[mm]	[mm]
						DN 40	DN 25	94	44
						G1 1/2" IG	G1" AG	69	

Pumpentyp	Lges	LPK	A	B	C	ØD	HS	HD	HM
	[mm]	[mm]	[mm]	[mm]	[mm]	[mm]	[mm]	[mm]	[mm]
M10.1 SSF 400V	447,5	239	195	100	125	10	80	183	191,8
M10.1 SSR 400V	422,5	214						178	



MARCH PUMPEN GmbH & Co.KG  
 Rathenastraße 2  
 D-35394 Gießen  
 www.march-pumpen.com  
 info@march-pumpen.com

Alle Angaben unverbindlich, technische Änderungen vorbehalten!  
 Technical data not binding and subject to change!  
 Copyright MARCH PUMPEN GmbH & Co.KG 2017

Status	Änderungen	DATUM	Name

Abmessungen  
 Dimensional Drawing  
 EUROLINE M10.1

DPGE-0101

1  
 A3